

Kent County Rugby Football Union Limited



**2018-2019
Handbook**

**President
John Nunn**

Contents

The Rules of Kent County Rugby Football Union Ltd	3
Kent County RFU Structure	5
Officers & Executive Committee	6
Sub Committees	7
RFU Staff	10
Representatives on Other Committees	11
County Committee Meetings	11
Kent Society of Rugby Football Union Referees Limited	12
Important Dates	13
Men's Leagues	14
Women's Leagues	16
RFU Principal Fixtures for Season	17
County Fixtures	18
County Mini & Youth Festivals	19
Shepherd Neame Kent Competitions	20
Competition Rules & Regulations	21
Member Clubs	25
Club Internet Directory	26
Associates of KCRFU	27
Sponsors	34
Partners	37

The Rules of Kent County Rugby Football Union Ltd

Registered under the Co-operative and Community Benefit Societies Act 2014 (Register Number: 29080 R) are printed separately and each Member and Member of Committee has copy available for inspection.

Reg. Office, Leonard House, 5-7 Newman Road, Bromley, Kent BR1 1RJ

CONSTITUENT BODY RESOLUTIONS

1. The Annual Subscription of this Union shall become due on the 31st October in every year and shall be:

£50 for Members	£10 for Individual Associates
£20 for Associated Clubs	£250 for Corporate Associates

(any member failing to pay the subscription by 1st November shall cease to have a vote for any purpose whatsoever in accordance with Rule 5.8.1.)

2. The County uniform shall consist of a dark blue jersey with the County Badge in white on the left breast, dark blue shorts and dark blue stockings with light blue tops and shall be worn by players in County Matches. Only past and present players of the County Championship team or those players who have played six times in a County Representative (not 2nd XV) team; Match Officials of the Kent Society of Rugby Football Union Referees who have been appointed to County Championship matches (Referees - 1 match, Assistant Referees - 6 matches); the Officers, Past Officers, Vice-Presidents, and members of the Committee who have served for at least three years shall be entitled to wear the official County Tie.

The Committee may at their discretion award Blazer Badges, the expense of such badges to be borne by this Union if the Committee so decides, by a majority of not less than two thirds. The minimum qualification for such an award shall be playing in or refereeing six County Championship matches. The Committee may also award Blazer Badges at their discretion (subject to a two thirds majority) to mark the services of Past Officers and members of the Committee who have given long and meritorious services for at least ten years, the expense of such badges to be borne by this Union. Past President Blazer Badges are to be awarded at the end of the President's term of office, the expense of such badge to be borne by this Union.

3.1: The Kent Executive Committee appoints members of a Discipline Committee. The Discipline Committee reports to the Executive Committee but acts independently.

Such Disciplinary Committee shall:

3:1.1: have the power to impose appropriate punishment on any player, official or member of its club for an infringement of the Laws of the Game or of an RFU Rule or Regulation,

3:1.2: exercise such power in a fair and open manner with the accused always having a right to attend and put his case after having first been given reasonable notice of the hearing, and

3:1.3: exercise its power without prejudice to the right and obligation of this Union to deal with such matters in accordance with the disciplinary powers delegated to it by the Rugby Football Union.

3:2: In addition each Member must have a proper appeals process which is independent of its Disciplinary Committee.

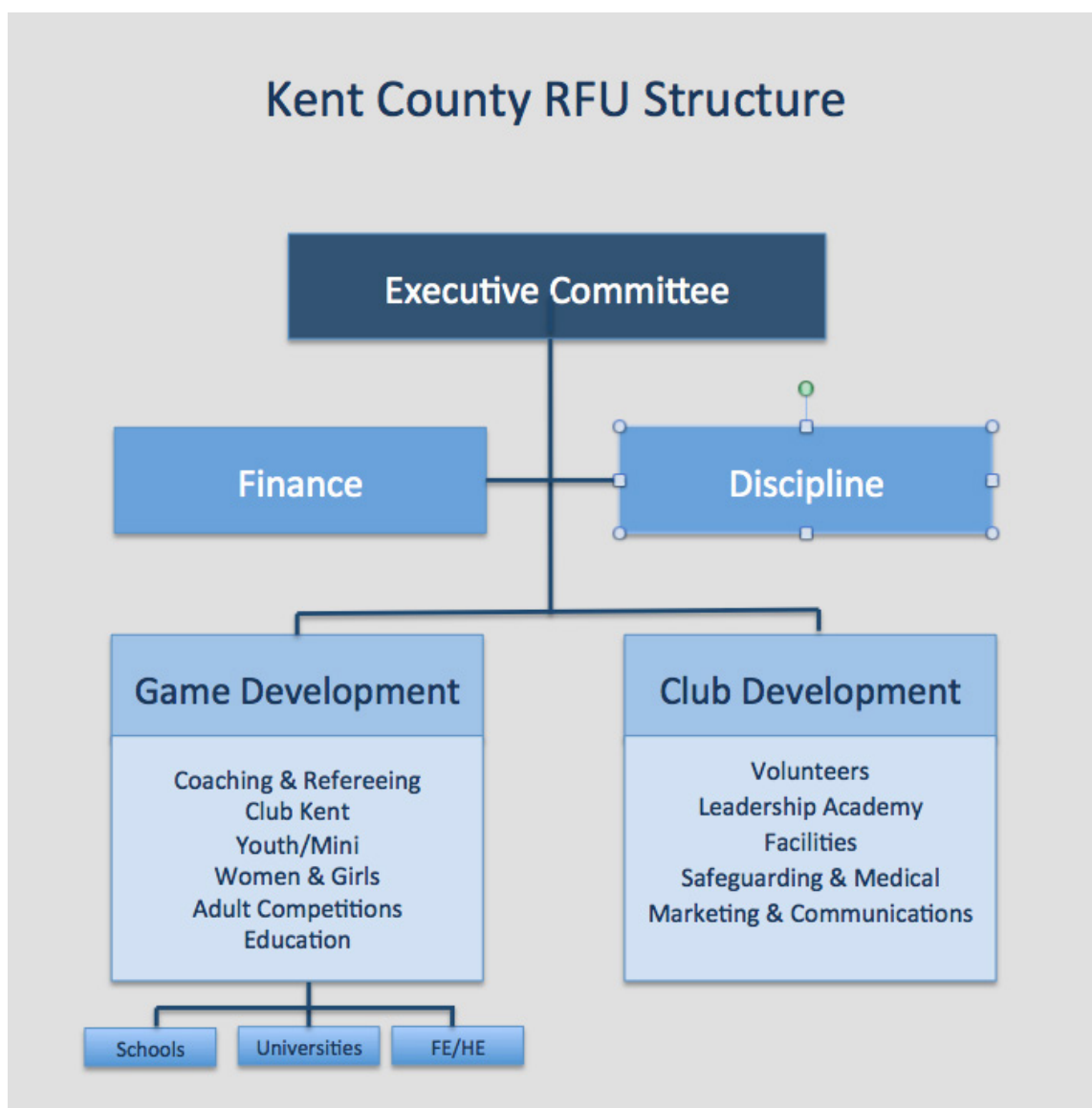
3:3: This Union shall be entitled to levy a charge against a Member to indemnify this Union against the expenses of a Disciplinary Hearing following the sending off of a player from the playing enclosure or when a player has been cited by another club within the stipulated time limit, or when a complaint has been made by a club against a Member and this Union deems it appropriate to hold a Disciplinary enquiry under RFU Rule 5.12. The amount of such levy shall be as determined from time to time by this Union.

4. All Members of this Constituent Body must have complied with the minimum requirements for Death and Disability Accident Insurance as required for its Member Clubs by the Rugby Football Union whether or not they are already Members of the Rugby Football Union.

5. The office of President may not be held continuously for more than three years and any nominee for such office must be a Member or Officer of the current Committee.

The County VAT Registration Number is 586 7066 94

Kent County RFU Structure



County Office

Kent Sport,
Worrall House,
30 Kings Hill Avenue,
Kings Hill,
Kent, ME19 4PJ

Office Manager

Mrs Tracy Pettingale
office@kent-rugby.org

Officers & Executive Committee

President – John Nunn
'The Mount'
27 Westmount Road
Eltham
London. SE9 1JB
(H) 020 8850 1853
president@kent-rugby.org

**RFU Council Representative – Roger Clarke
& Chairman Executive Committee**
(H) 01892 536748
(M) 07850 782115
chairman@kent-rugby.org

Hon. Secretary – Sylvia Taylor
89 Trevor Drive
Allington
Maidstone
Kent ME16 0QN
(M) 07851 066041
honsec@kent-rugby.org

Hon. Treasurer – Peter Dessent
Iolanthe
Chidham Lane
Chidham, Chichester
West Sussex PO18 8TH
(H) 01243 920946
(M) 07968 511501
hon-treasurer@kent-rugby.org

**Immediate Past President – Colin Blackham
(& Secretary, Discipline Sub-Committee)**
5 Turnstone
New Barn
Longfield
Kent. DA3 7NR (H) 01474 704576
discipline@kent-rugby.org

Governance & Implementation of Succession –
Nigel Fray
CB Facilities Co-Ordinator
(M) 07769 972455
facilities@kent-rugby.org

Chairman, Game Development - David Clent
(M) 07860 532660
game-development-chair@kent-rugby.org

Chairman, Club Development– TBC
(M) TBC
club-development-chair@kent-rugby.org

RFU Area 3 Manager – Jo Martin
(M) 07764 960387
jomartin@rfu.com

Sub Committees

Finance

Hon. Treasurer – Peter Dessent
(H) 01243 920946
(M) 07968 511501
hon-treasurer@kent-rugby.org

International Ticket Secretary – Tony Power
(H) 020 86502307
mailto:athpower@btinternet.com

Individual Membership Secretary – Steve Home-
wood
(H) 020 83001877
stevhomewood@towergate.co.uk

Discipline

Chairman – Tim Fagg
(H) 01580 753150
(M) 07799 118930
timfagg51@gmail.com

Vice-Chairman – Mike Newsom
(H) 01892 823739
(M) 07759 395451

Secretary – Colin Blackham
(H) 01474 704576
discipline@kent-rugby.org

Assistant Secretary - David Gardner
(H) 01303268565
(M) 07841639665
dtg725@yahoo.com

Schools/Youth – Andy Gent
(M) 07581 285979
amjgent@btinternet.com

Ordinary Member– S Corcoran

Ordinary Member -Huw Gronow

Game Development

Chairman - David Clent
(M) 07860 532660
game-development-chair@kent-rugby.org

Coaching & Refereeing – Dan Phimister
(M) 07904943302
coaching-refereeing@kent-rugby.org

Club Kent – Neil Wiltshire
(M) 07747616309
club-kent@kent-rugby.org

Senior Representative Rugby – Taff Gwilliam
(M) 07989 566848
director-representative-rugby@kent-rugby.org

Youth – Debby Park
(M) 07968 306069
youth-rugby@kent-rugby.org

Mini – Dawn Waters
(M) 07931511424
mini-rugby@kent-rugby.org

Women & Girls – TBC
(M)
women-girls-rugby@kent-rugby.org

Chairman of Adult Competitions – John Day
(H) 01892 536748
(M) 07850 782115
kent-comp@kent-rugby.org

Education – Chris Dengate
(M) 07770865866
education@kent-rugby.org

Kent Referees Society– David Oliver
(M) 07718 325242
chiefops@kentrefs.co.uk

Competitions Chairman
John Day
(H) 01689 854221
(M) 07908 255177
KentComp@mail.com

Club Development

Chairman - TBC

club-development-chair@kent-rugby.org

Volunteering – Steven Doughty

(M) 07784 142934

volunteering@kent-rugby.org

Leadership Academy – Andy Dawling

(M) 07903 139190

leadership-academy@kent-rugby.org

Facilities – Nigel Fray

(M) 07769 972455

facilities@kent-rugby.org

Safeguarding – Owen Smith

(M) 07890 962072

safeguarding@kent-rugby.org

Communications – TBC

(M)

Individual Membership Secretary –

Steve Homewood

(H) 020 83001877

stevhomewood@towergate.co.uk

Kent League Officials

Competitions Chairman

John Day

(H) 01689 854221

(M) 07908 255177

KentComp@mail.com

Competitions Secretary

John Arger

(H) 01580 891550

argerjm@aol.com

Kent 1 & 2

Roe Belcher

(H) 07703 599452

kent1@rfulondon.com

Invicta League

Mrs Lin Neal (Secretary/Co-ordinator)

(H) 01795 873983

lin2dave@aol.com

Premier West & Metropolitan Kent

Clive Putner (Results Co-ordinator)

(H) 020 8650 0211

cliveputner.btinternet.com

Premier East & Rural Kent

Howard Pearl (Secretary/Co-ordinator)

(H/B) 01732 763431

pearl.corner@tesco.net

Results Co-ordinator

Clive Putner

020 8650 0211

cliveputner.btinternet.com

Treasurer of Metropolitan League

Greg Bunnage

(H) 020 8467 1447

gregbunnage@gmail.com

Other Sub-Committees

Game Development

Club Kent

Neil Wiltshire - Chairman
Dan Webb - Kent DPP
Peter Johnson - U18
David Bowers - Kent Schools

Andrew Gwilliam - Senior Rep Rugby
Dan Phimister- DPP
Andy Dawling - Saracens DPP

Women & Girls Sub-Committee

TBC - Chairman
Kirsty Dobson - Manager U18
Gary Evans -Treasurer

G Bloxham – Secretary & Social Media
Paul Newman -Manager U15
Trish Sellors -U18 League

Coaching & Refereeing Sub-Committee

Dan Phimister - Chairman
Andy Dawling - Coach Development
Jonathan Wright - Referee Development

Alister Fulton - Coach Development
Richard Garrett - Coach Development
Jez Michaels - Referee Development

Education

Chris Dengate - Chairman
Mike Hollis - RFU

Gareth Jackson - RFU

Youth Rugby Sub-Committee

Debby Park – Chairman/U15,U16
David Bowers -Schools
Owen Smith -Safeguarding Officer
David Caddy -U17
Paul Moyse - U14
Stuart Pollard - U12

John Reilly – Secretary & Sevens/U18/Colts 12's
Andy Gent - Discipline
Dawn Waters - Mini
Gareth Withers - Turbo 10's
Chris Smith - U13

Adult Competition Sub-Committee

John Day - Chairman & (Cups)
Lin Neal - Invicta
Howard Pearl - Kent Rural
David Gardner - London 3 south East Dennis
Roger Dengate - Assistant Cups Officer

John Arger - Secretary
Cive Putner - Metropolitan
Roe Belcher - Kent 1 & 2
Attwood - London & SE Doc
Robin Taylor - Committee Member

RFU Staff

Development Officer for Rural Kent (outside M25) Club development queries and management of Community Rugby Coaches

Gareth Jackson
07738 648784
garethjackson@rfu.com

Development Officer for Metropolitan Kent (inside M25) Club development queries and management of Community Rugby Coaches

Mike Hollis
07764 336704
mikehollis@rfu.com

Community Rugby Coach

Richard Pulsford
07738 648829
richardpulsford@rfu.com

Community Rugby Coach

David Cheng
07715 856695
davidcheng@rfu.com

Community Rugby Coach

James Bloxham
07715 856698
jamesbloxham@rfu.com

Community Rugby Coach

Mark Finnis
07872 073667
markfinnis@rfu.com

Area Manager for the Local Delivery Team in Kent, Surrey, Sussex and Essex

Jo Martin
07764 960387
jomartin@rfu.com

Area 3 Facilities Manager

Rick Bruin
07738 029211
rickbruin@rfu.com

Area 3 Training Manager

Jon Bates
07764 336709
jonbates@rfu.com

Area 3 Match Official Development Officer

Andrew Small
07872 827138
andrewsmall@rfu.com

Area 3 Player Development Officer

Grant Hathaway
07731 008175
granthathaway@rfu.com

Representatives on Other Committees

Rugby Football Union	Roger Clarke
Kent Schools' Rugby Football Union	David Clent
London RFU	RogerClarke
Secretary of Disciplinary Liaison Sub-Committee	Colin Blackham
Competitions Sub-Committee Representative	Dennis Attwood

Plus the Chairmen of County Sub-Committees, or their alternates, who sit on their equivalent Divisional Sub-Committee, where these exist.

County Committee Meetings

Executive Committee

Tues 4th September	Tues 30th October	Tues 11th December
Tues 29th January	Tues 19th March	Tues 7th May
Tues 25th June		

Club Development Committee

Tues 21st August
Tues 27th November
Tues 5th March
Tues 23rd April

Game Developemnt Committee

Tues 28th August
Tues 4th Decemeber
Tues 12th March
Tues 30th April

Sub-Committee Meetings will be arranged as necessary and members will be notified by the Secretary of the Sub-Committee as to the time and venue.

County Disciplinary Hearings

In the normal course will be arranged ad hoc, to comply with RFU Discipline Regulations.

Kent Society of Rugby Football Union Referees Limited

President

Clive Evans
(H) 01892 534040
(M) 07826 505059
president@kentrefs.co.uk

Honorary Patron

Robert Horner
(H) 01959 522024
(M) 07767 421878 rhorner366@btinternet.com

Chairman (& Society Compliance Officer)

Bill Hobba
(H) 01732 771397
(M) 07715 485730
chairman@kentrefs.co.uk

Chief Operating Officer

David Oliver
(H) 01732 843851
(M) 07718 325242
chiefops@kentrefs.co.uk

www.kentrefs.co.uk

Secretary & Chief Financial Officer

Alan Crane
(H) 01959 565160
(M) 07785 244202
cfo@kentrefs.co.uk

Training Officer

Nick Wickham
(H) 01732 490401
(M) 07766 490401
sto@kentrefs.co.uk

Appointments

Mark Hayward
(M) 07986 762316
appointmentsteam@kentrefs.co.uk

Administration Officer

Tracy Pettingale
(M) 07952 638643
admin@kentrefs.co.uk



Important Dates

31st October 2018

Payment of RFU Membership Subscription, and Kent Affiliated and Associate Club (Members) subscription. Also Associates (individual and Corporate) Subscriptions.

11th December 2018

Notice is hereby given that the Kent County Rugby Football Union Limited Annual Financial General Meeting will be held at 7.00pm at the Holiday Inn, Wrotham Heath

30th April 2019

Last date for the receipt by the Hon. Secretary, Kent County RFU, of nominations for Officers and Members to serve the County' Committee for the season 2019/2020.

30th May 2019

Last date for receipt by the Competitions Sub-Committee Chairman of applications to enter the Shepherd Neame Kent Cup, Kent Shield and Kent Vase for the season 2019/2020, accompanied by the entry fee of £25.00

26th June 2019

Notice is hereby given that the Kent County Rugby Football Union Limited Annual General Meeting will be held at 7.30pm at Sheppey RFC.

Keep abreast of County Rugby information at

www.kent-rugby.org

Ties

The County Tie (see resolution 2 on page 3) price £10.00, including postage, may be obtained from the Hon. Secretary on written application, by those who are eligible to wear it.

The Under 20 XV Tie is obtainable from the Director of Representative Rugby.
director-representative-rugby@kent-rugby.org

The Associates Tie, price £10.00 including postage, may be obtained from the Hon. Secretary or the Individual Membership Secretary

Men's Leagues

National League 1 (level 3)

Amphill & District
Birmingham Moseley
Bishop's Stortford
Blackheath
Caldy
Cambridge
Chinnor
Cinderford
Darlington Mowden Park
Esher
Loughborough Students
Old Elthamians
Plymouth Albion
Rosslyn Park
Rotherham
Sale

National League 2 South (level 4)

Barnes
Birmingham & Solihull
Bury St Edmunds
Canterbury
Clifton
Dings Crusaders
Guernsey
Henley
London Irish Wild Geese
Old Albanians
Old Redcliffians
Redingensians
Redruth
Taunton
Tonbridge Juddians
Worthing

London & SE Premier (level 5)

Bedford Athletic
Brentwood
Chingford
CS Rugby 1863
Dorking
Guildford
Hertford
Shelford
Sidcup
Sutton & Epsom
Tring
Tunbridge Wells
Westcliff
Wimbledon

London 1 South (level 6)

Brighton
Camberley
Chichester
Chobham
Cobham
Dartfordians
Havant
Hove
London Cornish
Medway
Sevenoaks
Thurrock
Tottonians
Westcombe Park

London 2 South East (level 7)

Aylesford Bulls
Beckenham
Charlton Park
Deal & Betteshanger
Dover
Gravesend
Haywards Heath
Heathfield & Waldron
Horsham
Maidstone
Old Colfeians
Thanet Wanderers

London 2 South West (level 7)

Eastleigh
Effingham & Leatherhead
Farnham
Gosport & Fareham
KCS Old Boys
London Exiles
Old Alleynians
Old Cranleighans
Old Emanuel
Old Reigatians
Old Tonbridgians
Twickenham

London 3 SE (level 8)

Beccehamians
Bromley
Crowborough
Folkestone
Hastings & Bexhill
Hellingly
Lewes
Old Dunstonians
Old Williamsons
Park House
Pulborough
Vigo

Kent 1 (level 9)

Ashford
Cranbrook
Footscray
Gillingham Anchorians
HSBC
King's College Hospital
New Ash Green
Old Gravesendians
Royal Bank of Scotland
Sheppey
Southwark
Whitstable

Kent 2 (level 10)

Askeans
Bexley
Brockleians
Cliffe Crusaders
Dartford Valley
Faversham
Greenwich
Lordswood
Sittingbourne

Shepherd Neame Leagues

Invicta

Beckenham 2
Canterbury Pilgrims
Dartfordians 2
Medway 2
Old Alleynians 2
Old Colfeians 2
Old Elthamians Dev
Sevenoaks 2
Sidcup 2
Tonbridge Juddians 2
Tunbridge Wells 2
Westcombe Park 2

Premier 2 West

Beckenham 3
Charlton Park 2
Dartfordians 3
Old Alleynians 3
Old Dunstonians 2
Old Elthamians 3
Orpington 1
Sidcup 3
Southwark 2

Premier 2 East

Aylesford Bulls 2
Canterbury 3
Deal & Betteshanger 2
Dover 2
East Peckham & Paddock Wood 1
Gravesend 2
Maidstone 2
Medway 3
Sevenoaks 3
Snowdown
Thanet Wanderers 2
Vigo 2

Metropolitan Kent

Spitfire 3

Beccehamians 2
Beckenham 4
Blackheath Bandits
Bromley 2
Dartfordians 4
Guys Hospital 2
King's College Hospital 2
Old Alleynians 4
Old Colfeians 3
Park House 2

Bishops Finger 4

Beccehamians 3
Beckenham 5
Charlton Park 3
Erith 1
HSBC 2
Old Alleynians 5
Shooters Hill 1
Sidcup 4
Swanley 1
Westcombe Park 3

Master Brew 5

Brockleians 2
Bromley 3
Charlton Park 4
Dartford Valley 2
Dartfordians 5
Footscray 2
Gravesend 5
Met Police (Hayes) 1
Old Dunstonians 3
Southwark 3

Rural Kent

Late Red 3

Ash 1
Ashford 2
Cranbrook 2
Edenbridge 1
Folkestone 2
Gravesend 3
Leigh 1
Medway 4
Sevenoaks 4
Tunbridge Wells 3
Weaving 1
Whitstable 2

Cinque 4 West

Aylesford Bulls 3
Canterbury 4
Cliffe 2
Gillingham Anchorians 2
Gravesend 4
New Ash Green 2
Old Gravesendians 2
Sheppey 2
Tonbridge Juddians 3
Tunbridge Wells 4
Vigo 3

Cinque 4 East

Ashford 3
Ashford Barbarians 1
Canterbury 5
Deal & Betteshanger 3
Dover 3
Folkestone 3
Hastings & Bexhill 3
Maidstone 3
Sittingbourne 2
Thanet Wanderers 3

Women's Leagues

Championship South

Bath Ladies
Blackheath Ladies
Cheltenham Ladies
Henley Ladies
Hove Ladies
Reading Abbey Ladies
Thurrock Ladies
Trojans Ladies

Championship South East 2

Beckenham Ladies
Chesham Ladies
Hammersmith & Fulham Ladies
Hamstead Ladies
Lewes Ladies
Medway Ladies
Old Albanians Ladies
Old Elthamians Ladies

National Challenge South East 2

Cranbrook Ladies
Heathfield & Waldron Ladies
Hove Ladies 2
Lewes Ladies 2
Lordswood Valkyries Ladies
New Ash Green Ladies
Seaford Ladies

National Challenge South East East 1

Ashford Ladies
Canterbury Ladies
Harwich & Dovercourt Ladies
Romford & Gidea Park Ladies
St Francis Ladies
Tonbridge Juddian Ladies
Worthing Ladies

National Challenge South East Middle 2

Beccehamian Ladies
Crowthorne Ladies
Harlequin Ladies 3
High Wycombe Belles Ladies
London Irish Ladies
Risborough Ladies
Sutton & Epsom Ladies

National Challenge South East South 3

Burgess Hill Ladies
Dartfordians Ladies
Old Caterhamians Ladies
Pulborough Ladies
Westcliff Ladies

For all up to date fixtures and results for all Women & Men's leagues go to our website

www.kent-rugby.org/leagues/

www.kent-rugby.org/womens_leagues/

RFU Principal Fixtures for Season 2018-2019

Date	Fixture	Venue
13/10/18	Intermediate Cup , Senior & Junior Vase 1	
3/11/18	England v South Africa	Twickenham
9/11/18	England Red Roses v USA Women	Allianz Park
10/11/18	England v New Zealand	Twickenham
	Intermediate Cup , Senior & Junior Vase 2	
17/11/18	England v Japan	Twickenham
18/11/18	England Red Roses v Canada Women	Doncaster
24/11/18	England v Australia	Twickenham
	England Red Roses v Ireland Women	Twickenham
	Junior Vase 3	
1/12/18	Barbarians v Argentina	Twickenham
6/12/18	Oxford v Cambridge	Twickenham
2/2/19	Ireland v England	Dublin
	Intermediate Cup & Senior Vase 3, Junior Vase 4	
10/2/19	England v France	Twickenham
23/2/19	Wales v England	Cardiff
	Intermediate Cup & Senior Vase 4, Junior Vase 5	
9/3/19	England v Italy	Twickenham
16/3/19	England v Scotland	Twickenham
	Intermediate Cup, Senior & Junior Vase QF	
31/3/19	Under 20 County Championship QF	
14/4/19	Under 20 County Championship SF	
20/4/19	Intermediate Cup, Senior & Junior Vase SF	
4/5/19	Army v Navy	Twickenham
5/5/19	Intermediate Cup, Senior & Junior Vase Final	Twickenham
	Under 20 County Championship Final	Twickenham
10-11/5/19	European Club Finals	Newcastle
18/5/19	Women's County Championship SF	
25-26/5/19	World Rugby London Sevens	Twickenham
1/6/19	Aviva Premiership Final	Twickenham
2/6/19	England v Barbarians	Twickenham
	County Championship Final	Twickenham
	Women's County Championship Final	Twickenham

County Fixtures

Date	Match- Opponents	Venue	KO
3/2/19	Kent U20 v Eastern Counties U20	Old Colfeians RFC	3:00 pm
24/2/19	Kent U20 v Sussex U20	Cranbrook RFC	3:00 pm
17/3/19	Hertfordshire U20 v Kent U20	TBC	TBC
31/3/19	U20 County Championship Quarter Final	TBC	TBC
14/4/19	U20 County Championship Semi Final	TBC	TBC
28/4/19	Kent Women v Surrey Women	TBC	TBC
4/5/19	Kent v Cornwall	Medway RFC	3:00 pm
5/5/19	Kent Women v East Midlands Women	TBC	TBC
11/5/19	Gloucester v Kent	TBC	TBC
12/5/19	Sussex Women v Kent Women	TBC	TBC
18/5/19	Hampshire v Kent	TBC	TBC
19/5/19	Women's County Championship SF	TBC	TBC
26/5/19	County Championship Final	Twickenham	TBC
26/5/19	U20 County Championship Final	Twickenham	TBC
26/5/19	Women's County Championship Final	Twickenham	TBC

County Mini & Youth Festivals

Date	Age Grade	Venue	Time
24th March 7th April	Mini Festivals around the county Mini Festivals Reserve date (Awaiting further details)		

Shepherd Neame Kent Competitions

Clubs to utilise RFU FREE WEEKENDS but may play their matches (other than the Finals), at any time BY AGREEMENT, including midweek and under lights at neutral grounds. If agreement cannot be reached, then the match will be played on the allocated date.

Finals Day at Charlton Park RFC - Sunday 28th April 2019

Shepherd Neame Kent Cup, Shield and Plate

Draw for 1st round of Cup - RFU free w/e 1/9/18, 13/10/18 & 10/11/18

Canterbury	v	Sidcup
Ton Juddians	v	Old Elthamians

Draw for Semi Final of Cup - RFU free w/e 1/2/19 & 23/2/19

Medway	v	Canterbury/Sidcup
Westcombe P	v	Ton Judds/Old Elts

Draw for 1st round of Shield - RFU free w/e 1/9/18, 13/10/18 & 10/11/18

Charlton Park	v	Dover
Gravesend	v	Beccehamians
Maidstone	v	Aylesford Bulls

Draw for Semi Final of Shield - RFU free w/e 1/2/19 & 23/2/19

Charlton P/Dover Bulls	v	Maidstone/Aylesford Bulls
Old Dunstonians	v	Gravesend/Beccehamians

Shepherd Neame Kent Vase and Salver

Draw for 1st round to be played before 13th October 2018

Ash	v	Lordswood
Ashford Barbarians	v	Dartford Valley
Askeans	v	Swanley
Bexley	v	New Ash Green
Faversham	v	Cliffe Crusaders

Draw for 2nd round to be played on or before 24th November 2018

Ash//Lordswood	v	Brockleians
Ashford	v	Cranbrook
Ashford Barbars/D Valley	v	Southwark
Askeans/Swanley	v	Old Gravesendians
Bexley/NAG	v	Greenwich
Footscray	v	King's College Hosp
Sheppey	v	Gillingham Anchs
Sittingbourne	v	Faversham/Cliffe C

Competition Rules & Regulations

Shepherd Neame Kent Cup & Kent Shield (level 7 & 8 only)

1.The Competition is open to all Clubs, which are in full membership of the Kent County RFU and shall be played under the Rules and Regulations of the Rugby Football Union.

2.The management of this Competition shall be vested in the County Committee which shall appoint a Sub-Committee to be known as the Competitions Sub-Committee, which shall be responsible to the County Committee for organising the Competition and shall have full powers so to do and deal with all disputes and transgressions, including the power to disqualify any participating Club which may infringe any of the Rules of the Competition, and not to award any sponsorship monies to any participating Club which fails to fulfil any fixture either in the Cup or in the Plate Competition for a reason that is unacceptable to the Competition Sub-Committee.

3.Except for NCA Clubs playing in the Championship, National 1 and National 2, only League Registered players or Bona Fide playing members of participating Clubs who have played 5 matches during the season for any team of the Club may be selected and no player may play for more than one Club in the Competition in any one season. Failure to comply with this rule will carry automatic disqualification of both Club and player in the current Competition.

NCA clubs (those playing in National Leagues 1 and 2) must enter their 2nd (or lower) teams in the Kent Cup and Plate competitions. The definition of a 2nd team player is any player selected for their team in the Kent Cup or Plate must NOT have been in consecutive starting 1st XV(i.e. excluding replacements) line-ups in the 5 games prior to any Kent Cup or Plate match.

4 replacements will be allowed in all Kent competitions; out of the squad of 19, 5 must be able to play Front Row (9 player interchanges allowed).

4.Application to enter the Competition must be made to the Competitions Officer in writing or email not later than 30th May. The applicants shall state the name address and telephone number of the person to be responsible for future

communications. The draw shall take place on 31st May where after participating Clubs will be notified immediately. Entries received after 30th May will not be considered under any circumstances. There shall be an Entrance Fee of £25.00, which shall be paid on application.

5.All matches shall be played on the dates determined by the Competitions Sub-Committee in rounds sufficient to accommodate the number of Clubs properly entered. Each round shall be and of tries, the team that has scored the most goals from tries shall be the winner. If this does not produce a result, there shall not be a replay and the trophy will be shared.

10.The Referee shall have the power to order play to commence fifteen minutes after the official kick-off time, which for all games except any matches that take place in August and April, shall be 2.00 pm, unless otherwise agreed with the Competitions Officer

Shepherd Neame Kent Plate

1.The Rules of the Kent Cup/Kent Shield Competitions apply to the Plate Competition except where these Rules specifically exclude them.

2.The Plate Competition is open to all Clubs who enter the Kent Cup and Kent Shield who play and lose one match in that competition, whether that match be in the First or Second Round. A Club that does not fulfil its first match will be excluded from the Plate Competition. The Plate Competition will be drawn following the second round of the Kent Cup, and each round will be subject to a fresh draw.

3.Subject to Rule 2, each Club who applies to enter the Kent Cup and Kent Shield will automatically be entered for the Plate Competition unless that Club expressly indicates in writing that it does not wish to take part.

4.All matches shall be played on the dates determined by the Competitions Sub-Committee in rounds sufficient to accommodate the number of clubs properly entered. The Home Side shall be the first drawn in every round save in the Final.

5. Except for the Final and any matches that take place in April all matches will kick-off at 2.00 pm, unless otherwise agreed with the Competitions Secretary.

Shepherd Neame Kent Vase and Shepherd Neame Kent Salver

1. The Rules of the Kent Cup & Kent Shield Competitions apply to the Vase and Salver Competitions except where these Rules specifically exclude them.

2. The Vase and Salver Competitions are open to all Clubs who play in the Kent Leagues or who do not participate in the National or London Leagues.

3. All matches shall be played on the dates determined by the Competitions Sub-Committee in rounds sufficient to accommodate the number of clubs properly entered. The home side shall be the first drawn in every round save the Final.

4. Except for the Finals and any matches that take place in April all matches will kick-off at 2.00 pm, unless otherwise agreed with the Competitions Officer.

Shepherd Neame Invicta, Kent Rural & Kent Met Leagues

1. The objective of the Shepherd Neame Kent Merit Leagues is to retain players in amateur rugby, by providing a structured arena to play fixtures.

2. The Shepherd Neame Kent Merit Leagues (also referred to as SNKML) will consist of:
Invicta Leagues with teams drawn from 2, 3 or 4XVs of Kent 1XV teams playing in the English Clubs Championship, and 1st XVs of Kent clubs not playing in the English Clubs Championship.
Metropolitan Leagues with teams drawn from within a defined geographic area of suburban London and as listed in the County Handbook (for guidance, inside the M25 Motorway), or from Kent Rural clubs as otherwise agreed.

Kent Rural Leagues with teams drawn from non-suburban Kent clubs and as listed in the County Handbook (for guidance, outside the M25 Motorway), or Kent Metropolitan Clubs as otherwise agreed.

Metropolitan and Kent Rural Leagues may also accept teams from adjacent RFU Constituent Bodies if deemed appropriate and they affiliate to Kent County RFU.

3. Each League will be run by the League Committee of not less than three people, all of whom are to be elected by the relevant member clubs,

4. A Member club is a club which has at least one team entered into the League, and has not been withdrawn from the competition, and has paid the relevant annual stipulated fee.

4.1 An annual stipulated fee of £20.00 (twenty pounds only) is to be paid by member clubs for each team entered in the Shepherd Neame Merit League Competition. Any such fee shall be accepted at the level of £15.00 (fifteen pounds only) per team provided such total payment is received by the appropriate League Committee no later than November 30 in each season, failing which the full stipulated rate per team becomes payable.

5. League fixtures are to be played on a home and away basis in each season unless special circumstances apply. A League structured playing season detailing fixtures and playing dates will be provided to each member club prior to the commencement of each season, including requested and agreed changes. The structured season will also be posted on the Kent and RFU websites when finalised.

5.1 All League fixtures must be completed by 30th April each year.

6 If fixtures cannot be played on the scheduled date the teams are obliged to explore alternative dates to reschedule the fixture. Rescheduled fixtures need not be confined to Saturday afternoon.

6.1 Dates for playing any postponed fixtures, shall be agreed by the clubs and ratified by the League

6.2 Any fixtures not played on the original date, or

successfully rearranged will be deemed forfeit.

7. A team which finds itself needing to cancel a fixture, must contact the opposition before 2 o'clock pm on the day before the fixture, Cancellation must be made by making contact with an official representative of the club by telephone, or if needs must, via exchange of a voice message, email or text (or other such technical method). Contact is not considered to have been made until it has been acknowledged by the recipient. The teams are reminded of their obligation under rule 6 to find an alternative and mutually agreeable date to reschedule the fixture.

7.1 Any team that withdraws or is withdrawn from the league will have all records of results declared void and deleted from the respective league table to provide a fair and level competition for the remaining teams in that table.

7.2 Any team that gets close to forfeiting 25% of their league fixtures will be given written notification of this and warned of the possible consequences which may include disqualification from the league.

8 It is recommended that the basis for use of Replacements is;

8.1 Replacements will be a maximum of three (3)

8.1.1 Rolling subs may be used. Law 3.14a is amended as follows; there is no limit to the number of substitutions that may be performed from the nominated replacements defined in Rule 8.1 or otherwise agreed in accordance with Rule 8.2.

8.2 In circumstances where either team or both teams have more than the maximum of three (3) replacements available, and in the spirit of the SNKML to field the available players, the respective captains and the appointed referee may agree to play the match with the one/or both team(s) using more than the usual maximum recommended number of replacements (as stated in Rule 8.1 above).

This agreement must be secured before the match and reported when confirming the result.

8.3 If one team has less than 15 players and the opposing team has replacements, the replacements are to be encouraged to play for the oppo-

sition.

8.3.1 No replacements are permitted to take to the field if the opposition has less than 15 players available. This rule is not intended to be applied if the reason for reduced numbers is due to injury or the supplication of red or yellow cards by the referee.

8.4 Law 3.5 is amended so that the minimum number of nominated front row players is always 3 for SNKML matches. The effect of this change on recording results is as follows

Where a match starts with both teams having qualified front row, the score will stand and a win claimed, in the usual way, even if the match has to go to uncontested scrums during play due to a lack of a qualified replacement.

In the event a match has to start with uncontested scrums, due to the absence of a qualified front row in one team, that team cannot go on to claim the league points for a win. If that is the outcome of the match after it is completed, the match will be recorded as having been drawn.

8.5 In the event of a match being played with un-contested scrums it is not necessary for either team to reduce the number of players on the pitch as a result of Law 3.6 unless as a result of suspension, tempory suspension.

9. The scoring system will be four (4) points for a win, three (3) points for a draw, one (1) point for playing and nil (0) points for a default (i.e. walk over).

9.1 One (1) bonus point will be awarded to a losing team if the final score line is within seven (7) points or less.

9.2 Regardless of the final score in any league match the widest point's differential that would be entered for league table purposes is forty (40) points.

9.3 Subject to Rule 7 above; any member club that calls off a league match without being able to successfully rearrange the match, renders the opposing team forty (40) score points and a win four (4) points and scores no points themselves.

9.4 Both clubs must report results to their respec-

tive league committee by 7.00 p.m. on the Monday immediately following the match either by telephone, email or other agreed procedure.
9.5 The League results and tables will be regularly updated, forwarded to league contacts and posted on the Kent and RFU websites.

10 Presentation of trophies will be made to the winning clubs at the end of each season. Plaques for the winners and runners-up in each league would be paid for and provided by the Kent County Rugby Football Union.

11. Promotion and relegation may apply between the Leagues. Where considered practicable by the Competitions Committee.

12 If a club forfeits a more senior fixture but continues to honour lower league fixtures on the same day, and that leads to a complaint from any team losing a merit table fixture with this reason being cited, the league coordinator may invoke rule 13.1 or allow the result to stand as is appropriate for the specific circumstances where a complaint is received. Disciplinary sanctions may be invoked by the League Committee.

13 All grievances are to be notified in the first instance by letter or email to the relevant league committee within 7 days following the fixture.

13.1 If, and in the opinion of the appropriate league committee, any member club, through its representatives or teams, has acted in direct infringement or disregard of the spirit and ethos of the SNKML competition, The League committee may impose sanctions and/or adjust recorded results or competition points, evenly and fairly.

14. Appeals against decisions made by the relevant league committee may be referred in writing to the Chairman of the KCRFU Competitions Sub-committee. All such appeals must be made/received within 14 days of receiving a decision from the appropriate league /committee.

Sponsor of the Kent Cup, Shield, Vase, Plate & Salver and the Local Kent Leagues



**The Brewery
17 Court Street
Faversham
Kent
ME13 7AX**

Member Clubs

RFU Associate Member
s Student
+ Club in County but not in RFU Membership

Kent Metropolitan Clubs – 36

Askeans
Beccehamians
Beckenham
Bexley
Blackheath
Brockleians
Bromley
Charlton Park
Combined London Old Boys +
Coutts & Co +
Crofton Albion +
Dartford Valley
Dartfordians
Erith
Footscray
Greenwich
Guy's Kings' & St Thomas's Hospital
HSBC
Kings' College Hospital
Metropolitan Police (Hayes)
Old Alceynians
Old Colfeians
Old Dunstonians
Old Elthamians
Orpington
Park House
Penguin International #
Pups Rugby +
Royal Arsenal +
Royal Bank of Scotland
Samurai International +
Shooters Hill
Sidcup
Southwark
Swanley +
Westcombe Park

Kent Rural Clubs – 35

Ash
Ashford
Ashford Barbarians
Autism in Rugby (AIR) +
Aylesford Bulls
Canterbury
Chiddingstone Badgers +

Cliffe Crusaders +
Cranbrook
Deal & Betteshanger
Dover
East Peckham & Paddock Wood
Edenbridge
Faversham
Folkestone
Gillingham Anchorians
Gravesend
Kent County Police +
Leigh
Lordswood
Maidstone
Medway
New Ash Green
Old Gravesendians
Old Williamsons
Sevenoaks
Sheppey
Sittingbourne
Snowdown
Thanet Wanderers
Tonbridge Juddians
Tunbridge Wells
Vigo
Weaving Warriors +
Whitstable

Kent Society of RFU Referees

Kent Schools' RFU

County Associated Clubs – 6

Goldsmiths University s
London South Bank University s
University of Greenwich s
Hastings & Bexhill
HMS Kent
Saracens

Club Internet Directory

Ash	http://www.ashrugbyclub.co.uk
Ashford	http://www.ashfordrugby.co.uk
Askeans	http://www.askeans.co.uk
Aylesford Bulls	http://www.aylesfordbulls.com
Beccehamians	http://www.beccehamians.co.uk
Beckenham	http://www.beckenhamrfc.com
Bexley	http://www.pitchero.com/clubs/bexleyrfc
Blackheath	http://www.blackheathrugby.co.uk
Brockleians	http://www.brockleians.co.uk
Bromley	http://bromleyrfc.rfu.club
Canterbury	http://www.cantrugby.co.uk
Charlton Park	http://www.charltonpark.org.uk
Combined London Old Boys	http://www.pitchero.com/clubs/combinedlondonoldboys
Cranbrook	http://www.cranbrookrugby.com
Dartford Valley	http://www.pitchero.com/clubs/darenthvalleyrfc
Dartfordians	http://www.dartfordiansrfc.co.uk
Deal and Betteshanger	http://www.dealandbettesrfc.org.uk
Dover	http://www.doverrfc.co.uk
East Peckham & Capel	http://www.pitchero.com/clubs/eastpeckhamrfc
Edenbridge	http://www.edenbridgerfc.co.uk
Erith	http://www.pitchero.com/clubs/erith
Faversham	http://www.favershamrugby.co.uk
Folkestone	http://www.folkestonerugbyclub.co.uk
Footscray	http://www.footscrayruffc.co.uk
Gillingham Anchorians	http://www.anchoriansrfc.com
Gravesend	http://www.gravesendrfc.co.uk
Greenwich	http://www.greenwich-rfc.co.uk
Guy's King's & St Thomas' Hospital	http://www.pitchero.com/clubs/guyshospitalrfc
King's College Hospital	http://www.kchrfc.co.uk
Leigh	http://www.leighrfc.co.uk
Lordswood	http://www.lordswoodrfc.co.uk
Maidstone	http://www.maidstonerugby.org.uk
Medway	http://www.mrfc.net
Metropolitan Police (Hayes)	http://www.pitchero.com/clubs/mphayesrfc
New Ash Green	http://www.pitchero.com/clubs/newashgreenrfc
Old Gravesendians	http://www.pitchero.com/clubs/oldgravesendiansrfc
Old Colfeians	http://www.ocrfc.co.uk
Old Dunstonians	http://www.odrfc.co.uk
Old Elthamians	http://www.pitchero.com/clubs/oldelthamians
Old Williamsons	http://www.pitchero.com/clubs/oldwilliamsoniansrfc
Orpington	http://www.pitchero.com/clubs/orpington
Park House	http://www.parkhouserugby.co.uk
Penguin International	http://www.penguinrugby.com
Royal Bank of Scotland	http://www.rbsrfc.com
Samurai International	http://www.samurai-rugby.com
Sevenoaks	http://sevenoaksrugby.com
Sheppey	http://www.sheppeyrugby.co.uk
Shooters Hill	http://www.pitchero.com/clubs/shootershill
Sidcup	http://www.sidcuprfc.co.uk
Sittingbourne	http://www.srufc.com

Associates of KCRFU

Associates Membership Secretary:

S. K Homewood

(M) 07795 445404

Steve.Homewood@towergate.co.uk

From whom nomination forms may be obtained and to whom all correspondence regarding individual Associates should be addressed. (Form also available from www.kent-rugby.org/about-us/county-documents/page)

Associates Ties are available at a cost of £10.00 (postage paid).

Wilf Hawkins Shield

Kent County have an award annually awarded to the Club which recruits the most new Associates. See a list of winners in our Alumni document on our website documents page.

www.kent-rugby.org/about-us/county-documents/

Associates of KCRFU

Ash (4)

T Cobb
R Plant
P Ralph
D Stephens

Ashford (7)

M R Alexander
M G Barnes
A Barr
Dr G S Flack
G F Horne
N Crossley-Roberts
D J Webster

Askeans (29)

S Barry
T C Bensted
L R Blyth
M A Bromage
I Campbell
P J Dessent
S K Homewood
A M Hunt
I F Johns
G F Martin
S T G McManus
C Meadows
G R Morgan
J L Nedas
S Nedas
M G Pearse
D G Powell
W J Rushton
P Ryan
S P Ryan
L Skillman
G G Smith
P Sweeney
W J Rushton
L Skillman
G G Smith
P Sweeney
P R Taylor
G V Wickens

Aylesford Bulls (14)

T Alvis
S Amos
R Bryant
K D Burbidge

P S Carroll
W D Evans
T R L Hewett
S Pass
F Prescott
A Smith
Mrs S C Taylor
Mrs J C Williams
R Wilson
N Wiltshire

Beccehamians (4)

S Corcoran
J Downey
C Putner
M Van Dyckhoff

Beckenham (23)

J M Arger
M Danher
R Doyle-Davidson
P Dick
H Fitzpatrick
A W G Frazer
C B Gould
P D Gregory
P Gylanders
D Hepworth
M Knights
D H Peed
G Randle-Pillar
J Pinn
L Pinn
R F Pinn
J W G Purcell
D P Rayner
P M Russell
C Stevens
F I Sumner
W G Sumner
S C Tormey

Bexley (9)

J P Brunton
Dr M Simpson
P J Carroll
K V Cope
D Fehilly
R Nye
J Robinson
Mrs S A Robinson
T A Stevens

Blackheath (25)

L Ash
C L Bain
P J Bell
R L Challis
D Coates
G Cox
D Fussell
N Hancock
K Hannah
M Hull
R Khanna
D Stringer-Lamarre
S C W Matthews
B Nealon
M J Newsom
K Oliver
C J Piper
N Robinson
D R N Scaife
D I Sibley
A Stanley
M Stokes
Dr A B R Thompson
R M Williams
M A Worrow

Brockleians (8)

J Dennis
K A Forward
A Gearing
D Gibbs
D J Leaper
J R Legge
A H F Nelmes
P J Wheeler

Bromley (11)

J G Allen
B Cox
D J Davies
G F Wright
M Evered
J R C Freds
C J Friday
C T Gosling
A Hadwin
A Lauder
H N MacBride
J P J McKay

Associates of KCRFU

Canterbury (53)

P Allen
G Apps
S Austin
B Bell
Ms C Berrnthal
H G Bond
G A Bough
D Browne
C Coleman
J A Corrigan
D R Creed
Mrs T Dankert
C M Daughton
A J Davies
H Dunn
S C Elworthy
R Evison
P Gerrard
D Graham
N Greenwood
D V Haigh
T D O Hall
D I Hallwood
J E Hardy
P A Hermitage
G D Hilton
K Hymas
M A W Jones
D McCully
M G O'Reilly
R G Ovenden
D Parker
F Perkins
W E Piper
A P Pratt
G Pratt
J B Pratt
A E Redsell
J E Reilly
W Simpson
S Skelton
A T Jordan-Smith
G Stewart
S P Uglow
D Vaughan
G Vine
A Wakelin
G White
A Willett
I Winham
B C F Wiseman
F J Woodbridge

Charlton Park (6)

D Attwood
D K Collen
D G Hursey
A Potts
B Prichard
P Sharp

Civil Service (1)

D L Davies

Cranbrook (5)

P C Carter
J Fraser
L Maitland
M I McMinnies
N R Tubman

Croydon (1)

B R Purgavie

Dartford Valley (2)

J Davis Ashdown
A R Watson

Dartfordians (8)

B A Girling
P Govier
B C Jeffrey
T G Kirk
P B J Ladbrook
J Lawrence
J Parker
M S Renno

Deal & Bettes (30)

J K Ashley
Mrs D V Atkin
A Bentley
T Birkett
A Bowes
M Collins
J Crews
D Donachie
J K Dyer
M K R Dyer
P J Ebden
M T Feeney
G Griffiths
P J Hinkins
M R Howells

E Johnson
T J Laidlaw
P R Marriott
A Moss
J M Niblett
G J Nightingale
K F Nobbs
K F Nobbs
D C Osbourne
R G Owen
M Parker
D F Rose
A Stupples
P H Sykes
R J Waddon
J A Wise

Dover (6)

P J Alcock
M J Carley
R J Catt
M Hawker
G F Jeans
D W Pennington

Edenbridge (2)

H Field
W H H Jenkins

Erith (2)

P Beake
A Parnell

Folkestone (18)

R Bailey
A F Beggs
H G Elliott
G Foreman
A A Lloyd JP
F W Mahon
J F McPartlin
P O'Donnell
M O'Sullivan
C Pilcher
I Radford
W H H Robinson
D J Rosevear
A D Ruddock
W A Searle
Miss C Spencer
J G M Sullivan
J E Sutton

Associates of KCRFU

Footscray (2)

Mrs S P Ward
D Washer

Gillingham Anchorians(7)

M J Blee
R Bursey
M B Day
N G Fray
R E Hotham
J D Jezard
D Wilson

Gravesend (11)

R D Baker
M Cubitt
BT Curtis
A Dadson
N R W Edwards
I Fiddeman
Mrs T Gray
G L Haggard
G L Haggard
J Hopper
A C Panter
R F Rowlands

Greenwich Academicals (3)

J G H Deacon
A M Jordan
E T Trott

Harlequins (6)

G C Anderson
W C R Anderson
M J Bailey
J D Gibbs
M Johnson
Dr M H Sykes

Hong Kong Bank (1)

P G Mitchell

HSBC (2)

B R Goffrey
I McKinnon

John Fisher OB (1)

A Allen

Kent College (1)

R Morley

Kent Police (2)

A Golding
K A McCarthy

Kent Schools' RFU (4)

J D Hall
T W Sutton
L W C Truman MBE
D H W Turner

Kent Society of RFU Referees (9)

B Birchall
J S Carley
G Charters
T P Fagg
D T Gardner
O T Hall
J Milledge
F G E Osborne
Ms C N Warner

Kings College Hospital (2)

S J Hartley
I Metters

King's School (1)

M J Parks

Laugharne (1)

R G Jones

Lloyds Bank Group (2)

R H Berwick
T D Gaston

London Foreign Exchange (1)

R L Maidment

London Society of RFU Referees (1)

R F Johnson

London University (1)

Dr M E Heeley

Maidstone (39)

D J Arnold
M Arnold
W Arnold
R Beney
G R Burr
N Cole

D Coleman
N Cracknell
R F J Dancer
P O Davies
D Diamond
A C Dray
R Ewence
P Ewing
B Fridd
P J Giddings
D Gilliland
D Gray
R Hayton
C C L Hitchcock
R Lindsay
M Maytum
T M J McBennett
J McFarland
I Milsted
S D Neaves
C Perkins
D M Pezzato
T J Pilcher
S J Randall
AS Trotter OBEQPM
D Tugwell
R Vale
A G L Valentine
I Wilkinson
S Wright

Medway (14)

D G Barker
M J Collins
M J Dakers
G M Farrow
A J Gwilliam
C Johns
A Krasij
M Marriott
G N G Mason
M L Nevitt
D Pattenden
J Shibli
Dr D Shorne
M Snowwell

Met Police (Hayes) (1)

G Morant

Associates of KCRFU

New Ash Green (6)

C R Blackham
L J Littlejohn
P Littlejohn
P J G Martin
A W L Pett
I Richardson
M Whyte
Mrs M Whyte

Old Alleynians (6)

A P M Coulter
S Eaves
A H Evans
P H Herbert
P J Hulston
M R Telford

Old Birkonians (1)

A J Law

Old Colfeians (6)

D J Bodiam
J J Gallagher
R A Hussey
D Hodgkiss
J E C Nunn
A P Smith

Old Dunstonians (7)

R Bodenham
P W France
J F Grundy
A F B Hosking
A Proctor
M A Rogers
I K White

Old Elthamians (6)

R Allen
D A Clent
M A Fisher
S F Fisher
T H K Stockman
C Wood

Old Gravesendians(4)

L Bevan
T J Coomber
J Strike
N Turnidge

Old Haileyburians (1)

C T Barber

Old Paulines (1)

C W Madge

Old Reigatians (1)

E M Wheeler

Park House (5)

G Bunnage
R D Elves
B J Harding
B C Holley
M A Watts

Penguin International (2)

M R Cordell
A G L Wright

REME (1)

Brig. G J Rawlins

Royal Bank of Scotland (13)

C R Bird
J H Bowers
S Doherty
D M Faries
R I M Johnson
P McBrown
J O'Sullivan
A T H Power
M J Saunders
G M Shields
R Summers
G W C Teale
D Wrench

Sevenoaks (25)

L Adamson
W R Bastard
C D Birch
A Butterworth
P J Churchill
L N Coleman
C J Cornthwaite
N J Drake
S J England
A T Bryant-Fenn
A N Finlay
M Gibbons
R W Horner

R Hunt
A G Jennings
P Johnston
J R S Lark
H N Lavers
B M S Mauduit
D G H Morris
H G Pearl
W Pickance
G R Smith
F P Thompson
D A R Williams

Sheppey (1)

Mrs L Neal

Shooters Hill (9)

D A J Frampton
A Lewis
L Measures
I Purcell
D Rayment
H Sharp
N G Sharp
W White
D R Williams

Sidcup (14)

A J Crust
Mrs S W Daniel
D H Dickerson
S C Hill
A Jones
A C Keenan
A H Marsh
T Martingell
A S Maxted
C E R Prewer
J F Sibley
D Sterling
P J West
E H Williams

Sittingbourne (8)

H Chapman
D J Fairbrass
R R Goodwin
D P Highton
J Jenkins
K Smith
G West
K J Wildish

Associates of KCRFU

Southwark Police (1)

D Nolan

Streatham-Croydon (1)

D E Wood CBE

Thanet Wanderers (8)

N T Armstrong

P J Hawkins

W Hurley

T H Johnson

P J Macaulay

Dr R B Macaulay

D J Martin

Mrs M Watts

Tonbridge Juddians (15)

J F Boardman

D J Carver

S W Farr

R W Fitzwater

P M Grasby

B G Gregory

A de Guingard

D N Legg

G Martin

D R Metcalfe

M A Mitchell

M Norrie

K J Prior

D C Rose

A B Russell

Tunbridge Wells (25)

P A Alexander

Ms C Alton

S P Bassi

A P Capps

R J H Clarke

S Cooper

D M Corry

M E Corry MBE

S Cutts

K Fisher

P D Hardwick

S T Jones

J F King

R I H Lees

Ms S Lyne

J P Mandich

A H Mayer

S M Montgomery

A D Moxon

D Sloan

J Sweeney

D Turner

B C F Whiting

C F Wilkey

G Withers

Vigo (5)

A Cox

T Davis

R G Fletcher

M G E Sturges

D G Wells

Westcombe Park (43)

D J Barnes

M J Beese

G Boyd

L R Burrage

P Cavalli

D A Cobbold

D E Coombs

D M Davies

J Day

A F Ewens

N Finucane

T R Hadaway

T J Hodson

R J Innis

G Jagniaszek

S Jones

D Lambert

K L MacKenzie

Mrs G Mayatt

R Mayatt

S J M McGovern

F H Meakin

D Nemestothy

B N Osborn

P A Owens

M J Pether

T Pickett

P Pinner

J Pryor

R Randall

P K Ribbons

S R Robinson

R Russell

C Sands

R H Sherratt

R I Taylor

W F Thomson

J P Ward Turner

E Welch

K White

P Woodhouse

M P Wrack

J E Yeates

Whitstable (2)

R Dengate

J Kemp

Windsor (1)

S W Hayward

Unattached (58)

J Blunt

G Bowring

T R Brook

R Coleman

I Collinge

Mrs D E Coulson

R T Coulson

R Dennis

T Denny

N W Dobson

W F Dobson

W S Dobson

J S Durrant

D C Eley

T C Fagg

Dr S Fair

T Freeman

E Garrett

N Gibbons

C G Grimsey

T P Hampton

N Harper

J Hatfield

J N W Hoggard

R Boyd-Howell

M P Howells

P Jones

W J C Kemp

Mrs M E Kukoyi

Mrs B Kverndal

S R Kverndal

R K Lancaster

A B M Lees

Associates of KCRFU

A D Lench
R T Lench
N Lindsay
A Lucas
A N G MacLean
P Marsden
M Marsh
T J Miles
J B Neame
R H B Neame CBE
M Osborne
H G Potu
Dr A Robinson
G Robinson
S Rootes
P A H Scaife
P Stacey
Ms R Steele
D L Teakle
A Tollefson
I Wallrond
D Watts
E Watts
P J Watts
C G Woodruff

INTERESTED IN BECOMING A MEMBER OF KENT COUNTY RFU?



Have you considered becoming a member of Kent County RFU? The annual cost is only £10.00! For this, you get access to International tickets, and receive a copy of the Kent County RFU newsletter "In Touch".

The application form can be downloaded from the Kent County Website <https://www.kent-rugby.org/about-us/county-documents/>

Sponsors



Sponsor of the Kent Cup, Shield, Vase, Plate & Salver and the Local Kent Leagues

**The Brewery
17 Court Street
Faversham
Kent
ME13 7AX**

**Kent County RFU is grateful
for the generous sponsorship
given to support
the game in our County**



Schroders

www.schroders.com

**Kent County RFU and its Clubs
are grateful for the assistance
given to further the inclusion of
Special Schools in the 2018-2019
Tag Rugby Festival Programme**



Wooden Spoon

The children's charity of rugby

For further information
www.woodenspoon.com

**For details of Kent Region events contact
John Grundy: 01732 750667**



asb law



Rigby Taylor



BBS



Safer Kent



Clague Architects



CPG



Wooden Spoon

**KENT COUNTY
RFU
PARTNERS**